

FEATURES

- 42" Anodized Aluminum Wheel
- Lorenz manual winch
- All welded side design facilitates entry to boat from all sides of lift
- 60" to 66" of cradle lift
- In water cables are stainless steel
- Pulley shafts with grease fittings
- "v" style cradles w/roller guide system
- 2 position adjustable 54" legs



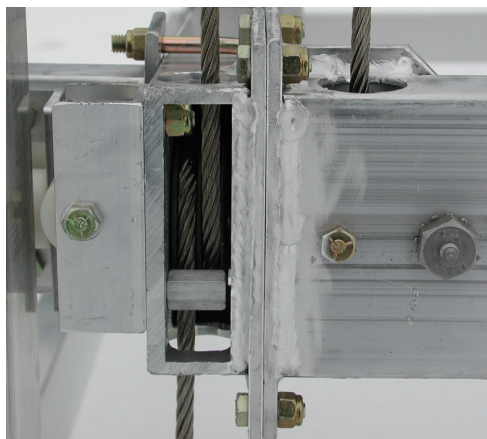
"U" Bolt terminal connectors are used for the strongest possible cable anchors



40110 Vertical Boat Lift

OPTIONS

- Lift Tech Direct Drive (12V solar or 110V both w/optional remote)
- Deluxe Bunks and Side Guides
- Poly Bunks and Side Guides
- 4' Poly Step Rail
- Pontoon Bunks
- Canopy
- 72" Deep Water Legs
- Bow Stop



Space age "NYLATRON" pulley sheaves are used with stainless steel shafts to permanently eliminate seizing of pulleys

- Lifts available in 3000 lb. to 5600 lb. lift capacities