

FEATURES

54" Rise on the 40110 / 40122

54" Rise on the 50110 / 50122

Lift cable: 3/8" galvanized

40110 / 40122 Leveling cable: 5/16" stainless

50110 / 50122 Leveling cable: 3/8" stainless

Nylatron pulley sheaves

24 volt power: with solar tender (battery not included)

Cycle Time: 35-40 seconds from bottom to top (with full battery charge)

Water Depth Requirement: 7" - 8" over center cradles (plus draft of boat)

Pulleys with grease fittings to facilitate quieter and longer-lasting pulley sheaves



OPTIONS

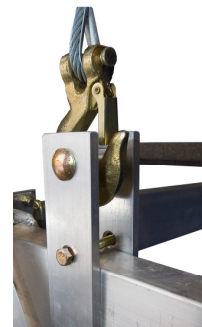
Canopies available in various lengths and colors

Full range of bunks, side guides, bow & motor stops

Convenient remote control

Deep water legs

110 volt trickle charger



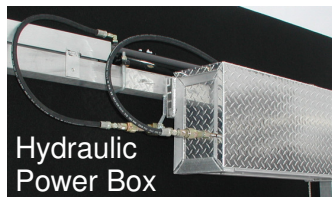
Mechanical Safety Cable

- Mechanical Safety is standard equipment, and used for long-term storage of your boat in the "up" position
- Hydraulic Oil is fully approved for marine use



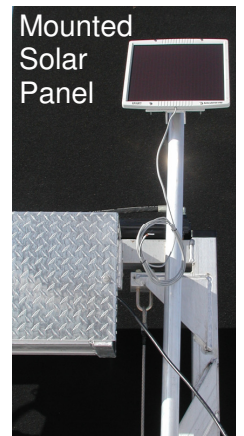
Hydraulic Cylinder

- Designed not to be submerged in water
- NO exposure to corrosion, floating debris & zebra mussels
- Cylinder rod is fully protected from corrosion when the lift is in the "up" position



Hydraulic Power Box

- Fully Enclosed Diamond Plate Box
- Protects Hydraulic Pump & Batteries



Mounted Solar Panel